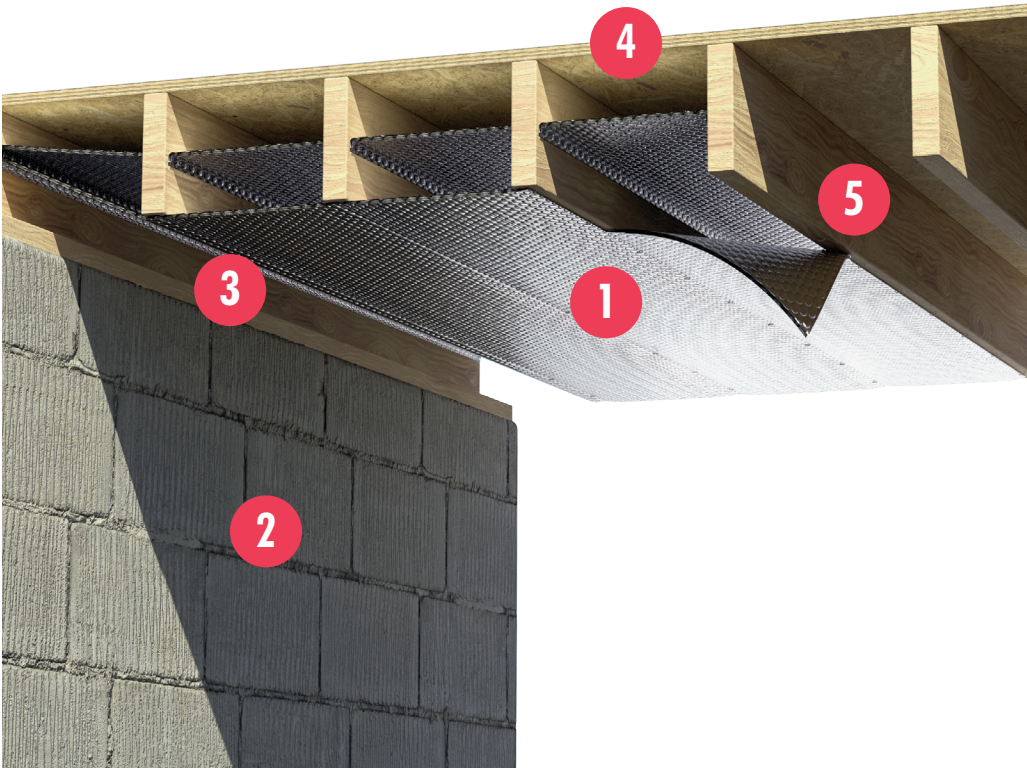


DIY | Crawl Space | R-21

Reflectix® Installation Instructions



1. Reflectix® Insulation
2. Concrete Block
3. Band Board
4. Sub-Floor
5. Floor Joist

Tools Required:

Safety Glasses
Staple Gun
Tape Measure
Utility Knife/Scissors

Recommended Products:

- Reflective/Bubble/Bubble/Reflective - Roll: BP24025 (24"x 25'), BP48025 (48"x 25')
- Staple Tab, Reflective/Bubble/Bubble/Reflective - Roll: ST16025 (16"x 25'), ST24025 (24"x 25')

Installation Instructions:

- Inspect the crawl space and make any needed repairs before installing Reflectix® Reflective/Bubble product.
- For floor joists that are 16" on-center, the installation is easiest with the Reflectix® Staple Tab (ST) product.
- Determine if there are water pipes and heating ducts which hang below the floor joists. They will need to be insulated. Reflectix® Pipe Wrap and Duct Insulations are designed specifically for this use. There is no need to wrap water pipes or duct work that fall between floor joists. Reflectix® will provide adequate insulating without extra wrapping.
- Begin at one end of the house and staple the first course of product to the top of the band board or the subfloor (also terminating this course in this fashion). Insert the Reflectix® half way up into the joist cavity and staple (at approximately 3" to 4" intervals) the edge of the product to the side of the joist. The goal is to split the joist cavity into two approximately equal enclosed air spaces. It is easiest to utilize the Reflectix® Reflective/Bubble/Bubble/Reflective, Staple Tab product for this step.
- Continue with the second course of product at one end of a joist cavity (after the first course has been installed) and secure the product "end" with staples to the band board. Proceed down the joists by stapling each edge (or middle of the Reflective/Bubble/Bubble/Reflective 48" wide product) to the face (bottom surface) of each joist. Staple the product at intervals of approximately 3" to 4". At the end of the product run, staple the Reflectix® to the band board.

- Seal seams with Reflectix® Foil Tape to create a vapor/moisture barrier.

Review These Important Safety Guidelines Prior to Installation:

- **ALWAYS** check local building codes before installing Reflectix®.
- **ALWAYS** check the area you are insulating and make any needed repairs. Any worn wiring should be replaced before you begin installing Reflectix®.
- **ALWAYS** make sure work areas are well ventilated and well lighted.
- **ALWAYS** use eye protection when operating a staple gun.
- **ALWAYS** use caution and common sense when using a staple gun. Be aware of where electrical wiring is located. Stapling into a wire can cause severe shock or death. **NEVER** staple into electrical wiring.
- **ALWAYS** be careful when working with large pieces of Reflectix® on windy days.
- When installing Reflectix® on bright sunny days, it is best to wear sun glasses.
- Do not work in areas such as attics when temperatures are too hot.
- Visit our website at www.reflectixinc.com for additional product and installation information.

Please Note: The intention of these Installation Instructions and 3-D renderings are for the sole purpose of illustrating the correct location and relative position of the Reflectix® products in specific building assemblies. The correct construction methods and techniques are the responsibility of the installer or contractor. The methods outlined are recommendations on location of the Reflectix® products as a guideline. There are no claims on the part of Reflectix, Inc. that these building assemblies are finite standards or meet building code requirements (as they can vary by region).

Reflectix, Inc.

#1 School Street (P.O. Box 108)

Markleville, IN 46056

Ph: (800) 879-3645 (US/Can)

(765) 533-4332

Fax: (765) 533-2327

Email: customerservice@reflectixinc.com

Web: www.reflectixinc.com

www.youtube.com/ReflectixInsulation

www.facebook.com/ReflectixInsulation

www.linkedin.com

www.pinterest.com/reflectixinc

Revised 012021