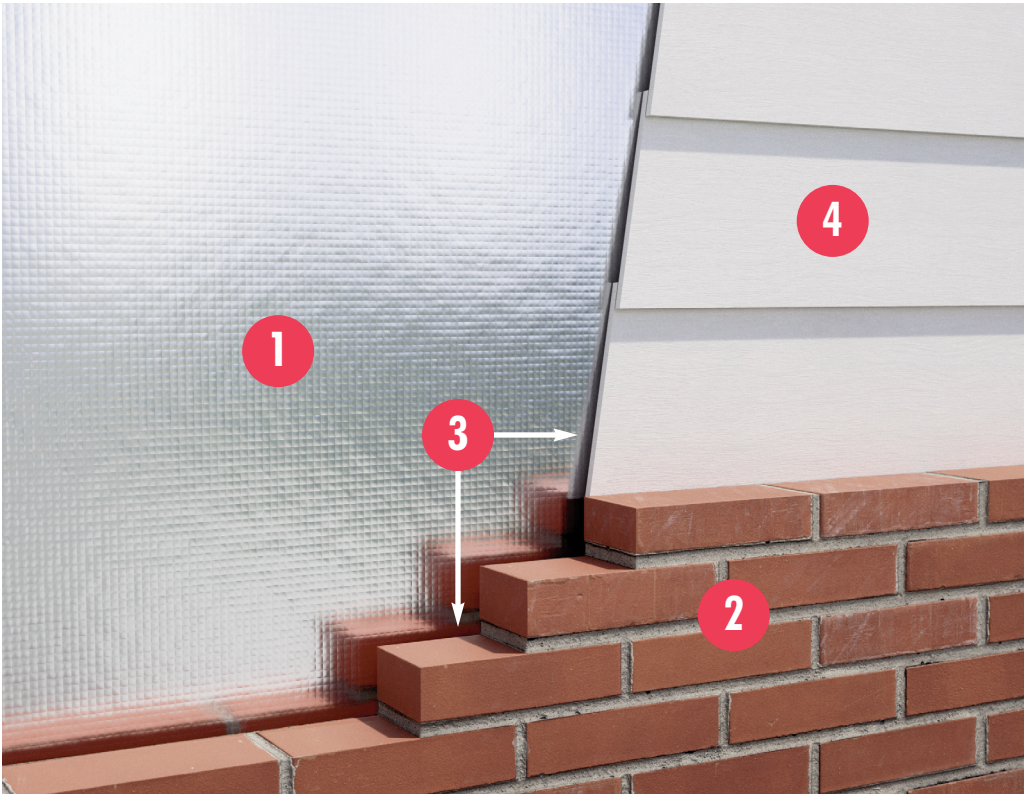


DIY | House Wrap | Behind Brick/Siding

R-3.4 Behind Brick

R-2.5 Behind Aluminum or Vinyl Siding

Reflectix® Installation Instructions



1. Reflectix® Radiant Barrier
2. Brick
3. Air Space
4. Aluminum or Vinyl Siding

Tools Required:

Safety Glasses
Staple Gun
Tape Measure
Utility Knife/Scissors

Recommended Product:

- Radiant Barrier, Reflective/Scrim/Reflective - Roll: RB4812550 (48"x 125')

Installation Instructions:

- Prior to installing the exterior finish, staple the Reflectix® Reflective/Scrim/Reflective, Radiant Barrier product (either vertically or horizontally) directly to the exterior side of the structural panel.
- Overlap the seams 2". Finish the exterior with brick or aluminum/vinyl siding.

Review These Important Safety Guidelines Prior to Installation:

- **ALWAYS** check local building codes before installing Reflectix®.
- **ALWAYS** check the area you are insulating and make any needed repairs. Any worn wiring should be replaced before you begin installing Reflectix®.
- **ALWAYS** make sure work areas are well ventilated and well lighted.
- **ALWAYS** use eye protection when operating a staple gun.
- **ALWAYS** use caution and common sense when using a staple gun. Be aware of where electrical wiring is located. Stapling into a wire can cause severe shock or death. **NEVER** staple into electrical wiring.
- **ALWAYS** be careful when working with large pieces of Reflectix® on windy days.
- When installing Reflectix® on bright sunny days, it is best to wear sun glasses.
- Do not work in areas such as attics when temperatures are too hot.
- Visit our website at www.reflectixinc.com for additional product and installation information.

Please Note: The intention of these Installation Instructions and 3-D renderings are for the sole purpose of illustrating the correct location and relative position of the Reflectix® products in specific building assemblies. The correct construction methods and techniques are the responsibility of the installer or contractor. The methods outlined are recommendations on location of the Reflectix® products as a guideline. There are no claims on the part of Reflectix, Inc. that these building assemblies are finite standards or meet building code requirements (as they can vary by region).

Reflectix, Inc.

#1 School Street (P.O. Box 108)

Markleville, IN 46056

Ph: (800) 879-3645 (US/Can)

(765) 533-4332

Fax: (765) 533-2327

Email: customerservice@reflectixinc.com

Web: www.reflectixinc.com

www.youtube.com/ReflectixInsulation

www.facebook.com/ReflectixInsulation

www.linkedin.com

www.pinterest.com/reflectixinc

Revised 012021