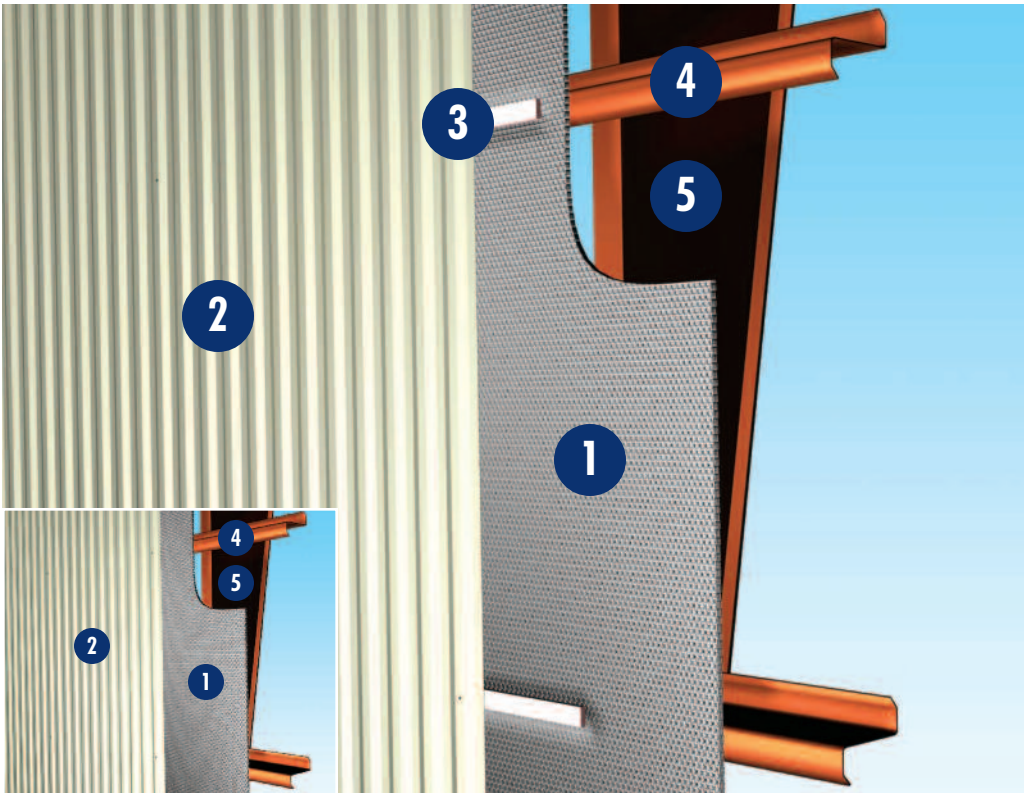


# Metal Building / Wall / New

## Reflectix® Installation Instructions



1. Reflectix® Insulation
2. Exterior Wall Panel
3. 3/4" Thermal Break
4. Girt
5. Red Metal (Structural Frame)

### Tools Required:

- Safety Glasses
- Tape Measure
- Utility Knife
- Screw Gun
- Staple Gun

### Recommended Products:

Staple Tab, Reflective/Bubble/Bubble/Reflective - Roll: ST48100 (48"x 100')

Metal Interior with a 3/4" Thermal Break: R-8.2

Open Interior with a 3/4" Thermal Break: R-6.0

Metal Interior with a Nominal 3/4" Drape in Product (No Thermal Break): R-5.9

Open Interior with a Nominal 3/4" Drape in Product (No Thermal Break): R-4.7

### Installation Instructions: (There are 2 options)

#### 1. Installed with 3/4" Thermal Breaks

- Install Reflectix® Reflective/Bubble/Bubble/Reflective, Staple Tab product vertically, using 1/2" self tapping screws. This will secure the insulation to the exterior of the C or Z girts.
- Tape the seams with a Reflectix® Foil Tape (goal is an air-tight, snug seam seal).
- Install a 3/4" thermal break and attach corrugated metal exterior finish.
- If an interior finish is applied, install the interior panels to the interior face of the girts.

This will create a 3/4" air space between the exterior finish and the insulation and an 8" air space between the insulation and the interior finish.

## 2. Installed with a 3/4" Drape in Product (No Thermal Break)

- When installing the product, insure there is a drape (towards the interior) of at least 3/4" at the center of the cavity.

**Calculation Disclaimer: All values are calculated based on the "ASHRAE Handbook of Fundamentals".**

### Review These Important Safety Guidelines Prior to Installation:

- **ALWAYS** check local building codes before installing Reflectix®.
- **ALWAYS** check the area you are insulating and make any needed repairs. Any worn wiring should be replaced before you begin installing Reflectix®.
- **ALWAYS** make sure work areas are well ventilated and well lighted.
- **ALWAYS** use eye protection when operating a staple gun.
- **ALWAYS** use caution and common sense when using a staple gun. Be aware of where electrical wiring is located. Stapling into a wire can cause severe shock or death. **NEVER** staple into electrical wiring.
- **ALWAYS** be careful when working with large pieces of Reflectix® on windy days.
- When installing Reflectix® on bright sunny days, it is best to wear sun glasses.
- Do not work in areas such as attics when temperatures are too hot.
- Visit our website at [www.reflectixinc.com](http://www.reflectixinc.com) for additional product and installation information.

### Please Note:

The intention of these Installation Instructions and 3-D renderings are for the sole purpose of illustrating the correct location and relative position of the Reflectix® products in specific building assemblies. The correct construction methods and techniques are the responsibility of the installer or contractor. The methods outlined are recommendations on location of the Reflectix® products as a guideline. There are no claims on the part of Reflectix, Inc. that these building assemblies are finite standards or meet building code requirements (as they can vary by region).

### Reflectix, Inc.

#1 School Street (P.O. Box 108)

Markleville, IN 46056

Ph: (800) 879-3645 (US/Can)

(765) 533-4332

Fax: (765) 533-2327

Email: [customerservice@reflectixinc.com](mailto:customerservice@reflectixinc.com)

Web: [www.reflectixinc.com](http://www.reflectixinc.com)

"Like Us" @: [www.facebook.com/ReflectixInsulation](https://www.facebook.com/ReflectixInsulation)

[www.youtube.com/ReflectixInsulation](https://www.youtube.com/ReflectixInsulation)

[www.pinterest.com/reflectixinc](https://www.pinterest.com/reflectixinc)

Revised 0919

