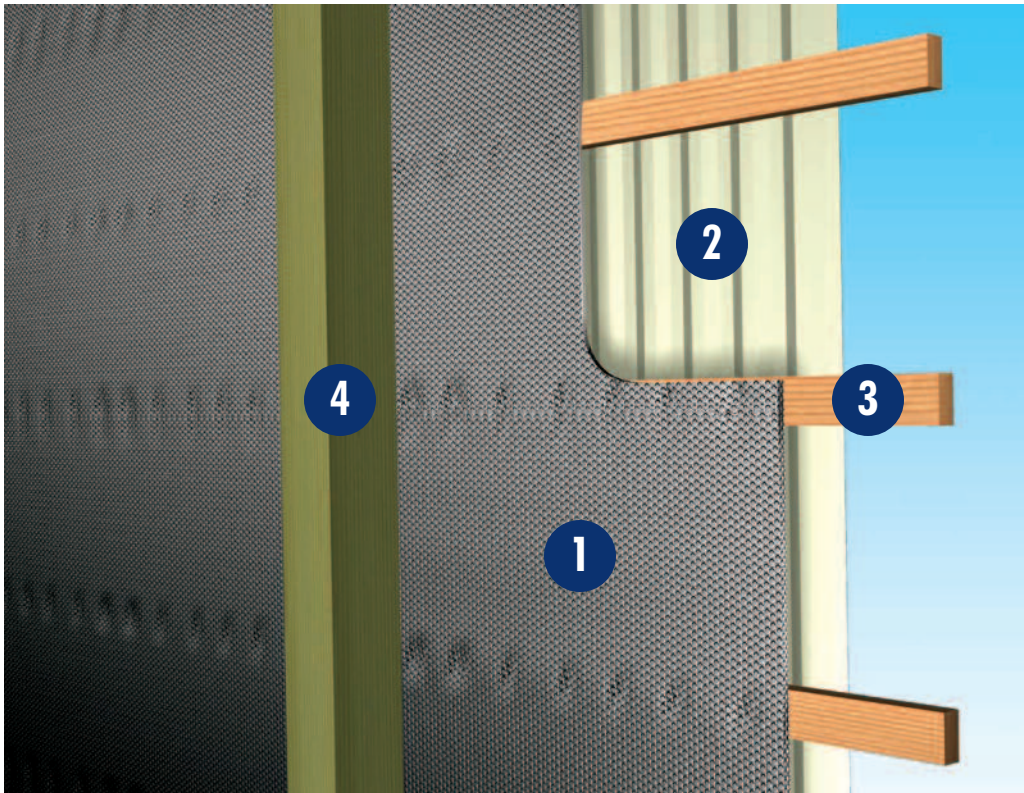


Post Frame Building / Wall / Retrofit

Reflectix® Installation Instructions



1. Reflectix® Insulation
2. Exterior Wall Panel
3. Girt
4. Post

Tools Required:

- Safety Glasses
- Tape Measure
- Utility Knife
- Staple Gun

Recommended Products:

Staple Tab, Reflective/Bubble/Bubble/Reflective - Roll: ST48100 (48" x 100')

Inside the Girts

Metal Interior: R-6.3

Open Interior: R-5.3

Installation Instructions:

- The Reflectix® Reflective/Bubble/Bubble/Reflective, Staple Tab product can be installed either vertically or horizontally.
- Attach the product to the inside of the girts using 5/16" staples at approximately 4" intervals.
- Tape the seams with a Reflectix® Foil Tape (goal is an air-tight, snug seam seal).
- For interior covering, attach 1" x 2" furring strips perpendicular to the girts through the insulation.
- Attach interior panel to the furring strips.
- This will provide a 1" (nominal) air space between the interior panel and the insulation and a 1 1/2" air space between the insulation and the outside panel.

Calculation Disclaimer: All values are calculated based on the “ASHRAE Handbook of Fundamentals”.

Review These Important Safety Guidelines Prior to Installation:

- **ALWAYS** check local building codes before installing Reflectix®.
- **ALWAYS** check the area you are insulating and make any needed repairs. Any worn wiring should be replaced before you begin installing Reflectix®.
- **ALWAYS** make sure work areas are well ventilated and well lighted.
- **ALWAYS** use eye protection when operating a staple gun.
- **ALWAYS** use caution and common sense when using a staple gun. Be aware of where electrical wiring is located. Stapling into a wire can cause severe shock or death. **NEVER** staple into electrical wiring.
- **ALWAYS** be careful when working with large pieces of Reflectix® on windy days.
- When installing Reflectix® on bright sunny days, it is best to wear sun glasses.
- Do not work in areas such as attics when temperatures are too hot.
- Visit our website at www.reflectixinc.com for additional product and installation information.

Please Note:

The intention of these Installation Instructions and 3-D renderings are for the sole purpose of illustrating the correct location and relative position of the Reflectix® products in specific building assemblies. The correct construction methods and techniques are the responsibility of the installer or contractor. The methods outlined are recommendations on location of the Reflectix® products as a guideline. There are no claims on the part of Reflectix, Inc. that these building assemblies are finite standards or meet building code requirements (as they can vary by region).

Reflectix, Inc.

#1 School Street (P.O. Box 108)

Markleville, IN 46056

Ph: (800) 879-3645 (US/Can)

(765) 533-4332

Fax: (765) 533-2327

Email: customerservice@reflectixinc.com

Web: www.reflectixinc.com

“Like Us” @ : www.facebook.com/ReflectixInsulation

www.youtube.com/ReflectixInsulation

www.pinterest.com/reflectixinc

Revised 0919

