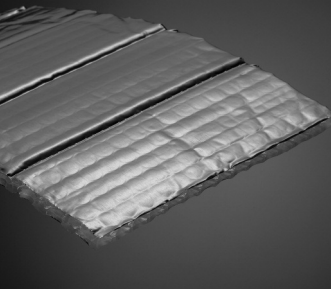


# R-8.0



## REFLECTIX® SUBMITTAL SHEET



### Features AT A GLANCE:

Reflectix® Duct Insulation may be installed by wrapping rectangular or round ductwork in HVAC applications

Heating costs can be greatly reduced

Eliminate unnecessary heat loss/gain and air leakage

Helps to ensure consistent temperatures

### WAREHOUSE LOCATIONS:

Markleville, IN

Phoenix, AZ

Greenville, SC

Needham, MA

Reflectix® Duct Insulation is an alternative to other types of fibrous insulation products. Ease of handling and quick installation make Reflectix® the first choice when selecting insulation for outdoor round or rectangular ductwork. The product provides an R-8.0 when installed with two 0.75" air gaps between the duct and two layers of the insulation.

### PRODUCT DESCRIPTION

Reflectix® Outdoor Duct Insulation consists of two outer layers of aluminum foil that reflect 97% or radiant heat. The outside layer of foil is made of heavier foil. Each layer of foil is bonded to a tough layer of polyethylene for strength. Two inner layers of insulating bubbles resist conductive heat flow while a center layer of polyethylene gives Reflectix® high reliability and strength.

### BENEFITS

- Non-toxic / non-carcinogenic
- Fiber-free
- Lowers heating and cooling costs
- Reflects 97% radiant heat
- Costs less to install
- Lightweight and clean
- Does not require protective clothing or respirators to install
- Does not promote nesting of birds, insects or rodents
- Resists growth of fungi, mold and mildew
- Not affected by moisture or humidity
- ISO 9001:2015 Certified Manufacturing Location

### REFLECTIX® DUCT INSULATION PART NUMBERS AND STOCK SIZES

- CDW48050 (48" x 50')

### APPLICATIONS

Install Reflectix® Outdoor Duct Insulation on the exterior of rectangular or round sheet metal ducts and spaces, or surfaces where temperature and condensation must be controlled.

### Technical Data:

Temperature Range:	250° Operational
Nominal Thickness:	5/16 inch (.312)
Weight:	1.25 oz./sq. ft.
Flame Spread Index (ASTM E 84):	Less than 25
Smoke Developed Index (ASTM E 84):	Less than 50
Fire Rating:	Class A/Class 1
Linear Shrinkage:	None
Reflectance (IR):	97%
Water Vapor Transmission (ASTM E 96):	0.02
Puncture Resistance:	60 lb./in.
Mold and Mildew:	No Growth
Emittance:	0.03
Tensile Strength:	3.7 N/mm
Pliability:	No Cracking
Hot Surface Performance:	Passed

Note: Not for use in direct contact on surface temperatures that are 180° F or greater.

Reflectix, Inc.

#1 School St. (PO Box 108)

Markleville, IN 46056

(800) 879-3645

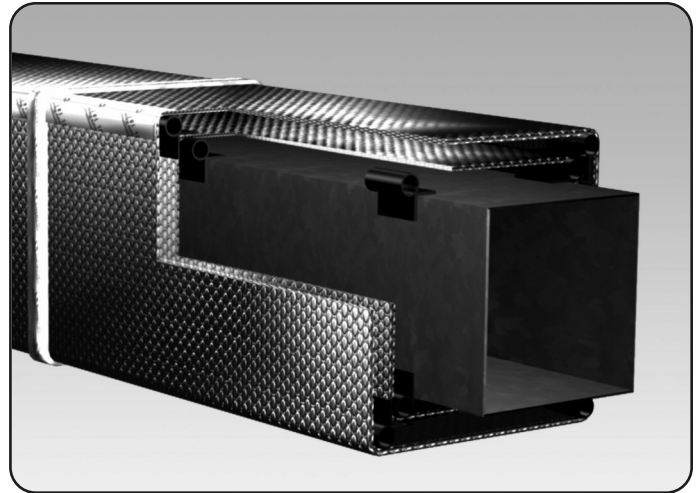
Fax: (765) 533-2327

www.reflectixinc.com



# TESTING & CERTIFICATIONS

- Thermal Performance ASTM C518
- Hot Surface Performance ASTM C411
- Flame Spread and Smoke Density ASTM E84
- Fungus Resistance Mil-Std 810B Method 508
- Pliability Test ASTM C1224
- Water Vapor Transmission ASTM E96
- Tensile Strength ASTM C751
- Emittance Testing ASTM C1371
- State of California
- State of California Licensed Insulation Manufacturer
- State of Minnesota: Filed with Minnesota Insulation Standards Program
- R&D Services Emittance Testing
- Warnock Hersey Professional Services, LTD: Physical Properties Sheet Width, Length, Pliability, Water Vapor Permanence and Aged Water Vapor Permanence Report # 1/92
- Warnock Hersey Professional Services, LTD: Water Vapor Transmission Test ASTM-E96 (Dessicant Method) Report # 1/91 Width, Length, Pliability, Water Vapor Permanence and Aged Water Vapor Permanence Report # 1/92
- Warnock Hersey Professional Services, LTD: Water Vapor Transmission Test ASTM-E96 (Dessicant Method) Report # 1/91



## MANUFACTURER'S SUGGESTED INSTALLATION INSTRUCTIONS

**NOTE:** Installation instructions and illustrated drawings are recommendations only, while proper local construction methods are the responsibility of the installer.

### HV SPACERS AFFIXED TO CORNERS METHOD (RECTANGULAR DUCTS ONLY)

#### SPACER: HVSPACER (REFLECTIX® HARD PLASTIC CORNER SPACER)

- Refer to the diagrams above.
- Make sure all sheet metal joints, seams and penetrations are sealed.
- Make sure the duct is free from dust and dirt by wiping it down with a shop rag.
- Install the HV Spacers to all 4 corners of the duct.
- Place the spacers every 24".
- Verify the circumference of the duct over the top of the spacers.
- Cut the Reflectix® to this length plus 1".
- Wrap the product over the spacers.
- Fasten the Reflectix® by either taping the seam with Butyl Foil Tape, or plier stapling the two edges together (goal is an air-tight, snug seam seal).
- Repeat the following steps over the outside of the first layer of insulation.
- Install the HV Spacers to all 4 corners (of the duct) on the product directly above the already affixed HV Spacers.
- Verify the circumference of the duct over the top of the spacers.
- Cut the insulation to this length plus 1".
- Wrap the product over the spacers. Note: The heavier "reflective layer" side of the product should face the environmental elements.
- Fasten the Reflectix® by either taping the seam with Butyl Foil Tape, or plier stapling the two edges together (goal is an air-tight, snug seam seal).
- If the duct is supported with saddle clamps, make sure to install a spacer on the two bottom edges of the duct directly between the clamp and the duct.

- If the clamps are installed around the duct (such as plumbers tape), make sure that the seam is taped to prevent air movement.

**PLEASE NOTE REGARDING HANGERS:**

**Strap Hanger:** Wrap Reflectix® with the seam at the hanger. Tape seam tightly around hanger.

**Saddle Hanger:** Make sure that there is a spacer below the hanger, between the insulation and the duct, to prevent the insulation from touching the duct.

**NOTE:** Not to be used as duct liner.

