

CERTIFICATION REPORT OF A

STANDARD FLAME SPREAD PROGRAM

CONDUCTED ON A

THERMAL INSULATING MATERIAL

CLIENT:

**REFLECTIX, INC.
#1 SCHOOL STREET
MARKLEVILLE, IN
46056**

REPORT PREPARED BY:

**INTERTEK TESTING SERVICES NA LTD.
WARNOCK HERSEY
211 SCHOOLHOUSE STREET
COQUITLAM, B.C.
V3K 4X9**

REPORT NUMBER: 3029843

**DATE: NOVEMBER 15, 2002
REVISED: NOVEMBER 21, 2002**

All services undertaken are subject to the following general policy:

1. This report is for the exclusive use of Intertek Testing Services NA Ltd.'s (ITS's) client and is provided pursuant to the agreement between ITS and its client. ITS's responsibility and liability are limited to the terms and conditions of the agreement. ITS assumes no liability to any party, other than to the client in accordance with the agreement, for any loss, expense or damage occasioned by the use of this report.
2. Only the client is authorized to copy or distribute this report and then only in its entirety. Any use of the ITS name or one of its marks for the sale or advertisement of the tested material, product or service must first be approved in writing by ITS.
3. The observations and test results in this report are relevant only to the sample tested. This report by itself does not imply that the material, product or service is or has ever been under an ITS certification program.



TABLE OF CONTENTS

	PAGE
INTRODUCTION	1
MATERIAL SPECIFICATIONS	2
SAMPLE MOUNTING	2
TEST PROCEDURE	3
FLAME SPREAD CURVES	5
SMOKE DEVELOPED CURVES	8
TEST RESULTS	11
CONCLUSION	12

Revised: November 21, 2002

MATERIAL SPECIFICATIONS

The material tested was selected by a representative of ITS/Warnock Hersey, and prepared and submitted by the client. The samples consisted of three rolls. Each roll was made up of two layers of aluminium adhered to a layer of polyethylene, two inner layers of bubble, and a center layer of polyethylene. The material was described by the client as Reflectix Insulation, also sold under the private label name "TempShield™". All samples were approximately 24 ft. long by 20-1/2 in. wide by 3/16 in. thick.

SAMPLE MOUNTING

The samples were placed on the upper ledge of the flame spread tunnel on 1/4 in. stainless steel rods, spaced at 24 in. on center, and chicken wire to help support the material during the test. A layer of 6mm reinforced cement board was placed over top of the samples, the lid lowered into place, and then tested in accordance with ASTM E84-01.

TEST PROCEDURE (*Continued*)

(B) **SMOKE DEVELOPED:**

A photocell is used to measure the amount of light, which is obscured by the smoke passing down the tunnel duct.

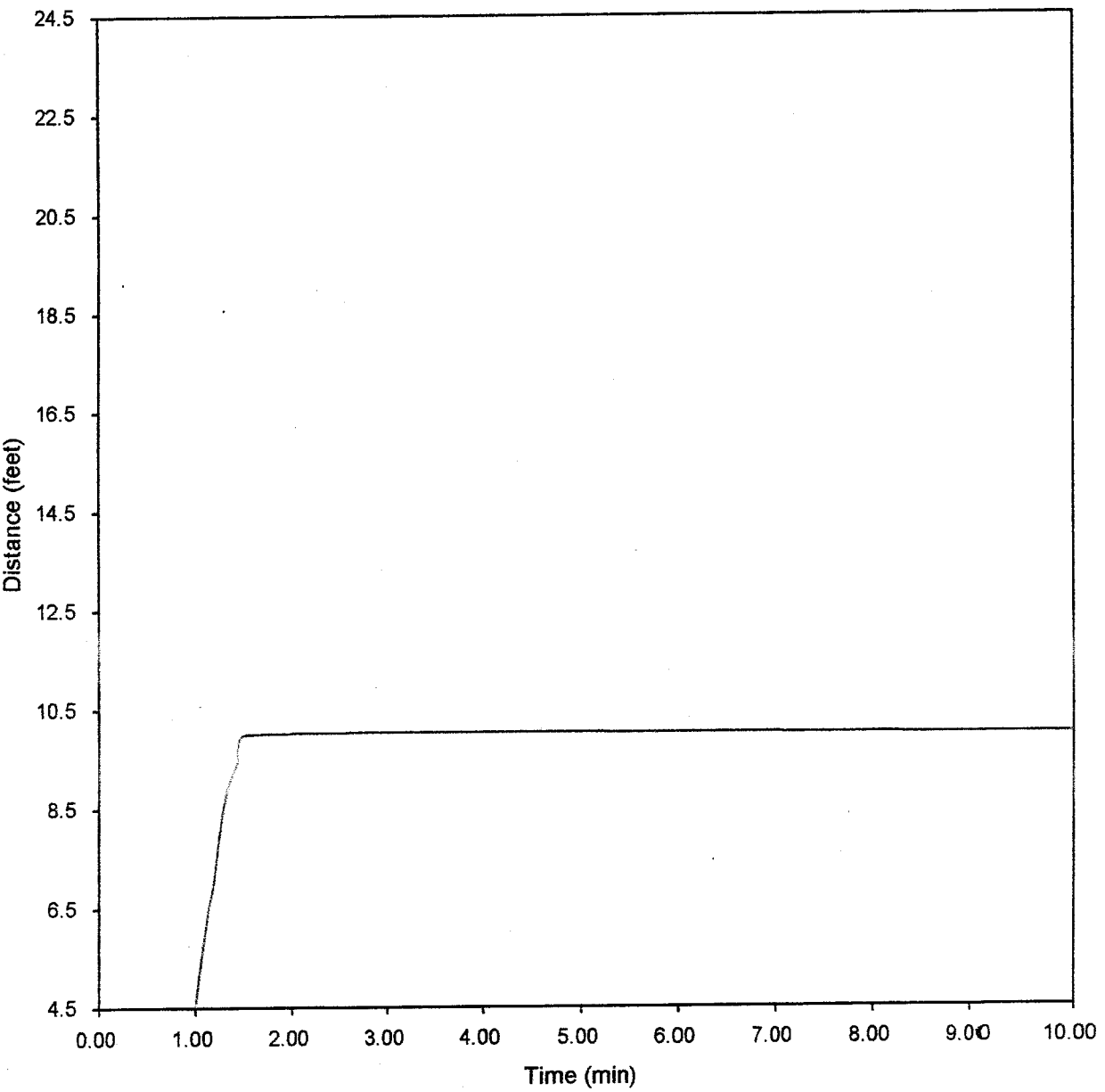
When the smoke from a burning sample obscures the light beam, the output from the photocell decreases. This decrease with time is recorded and compared to the results obtained for red oak, which is 100.

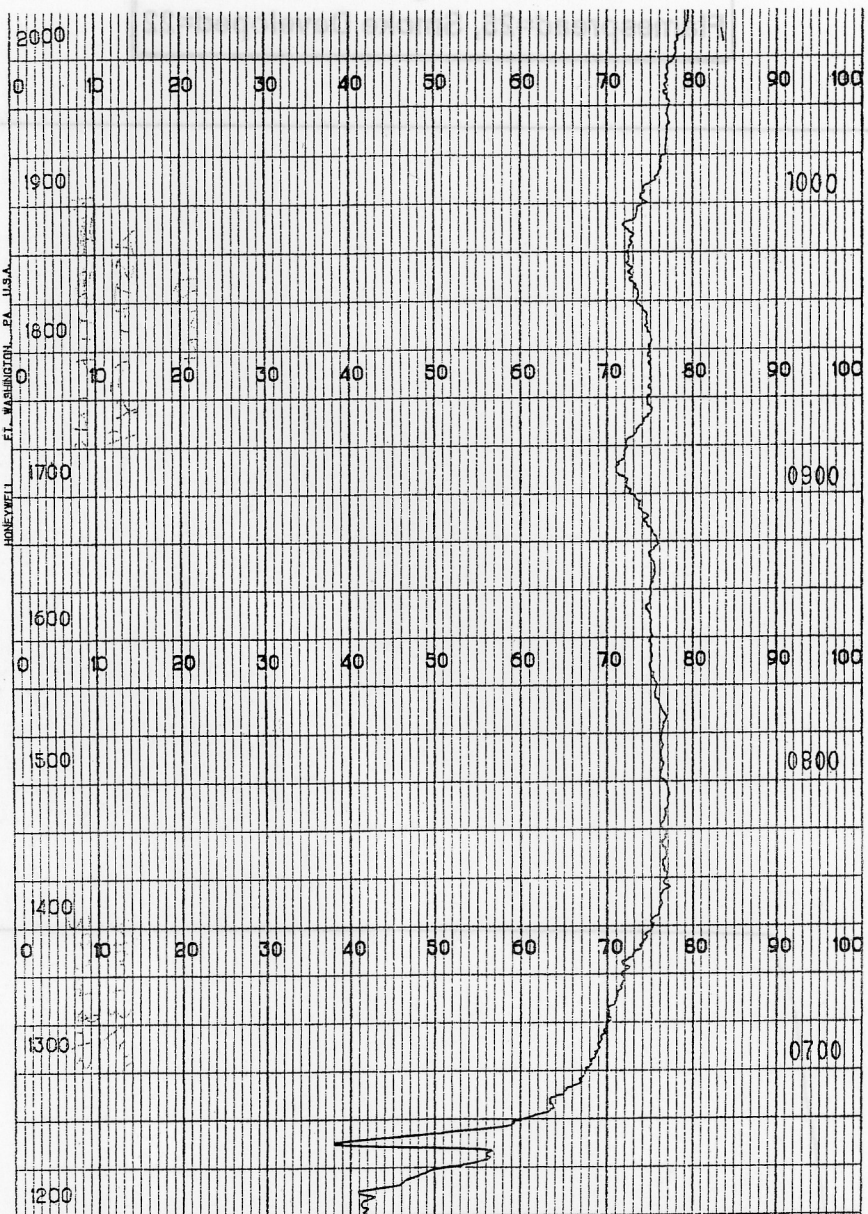
CALCULATIONS:

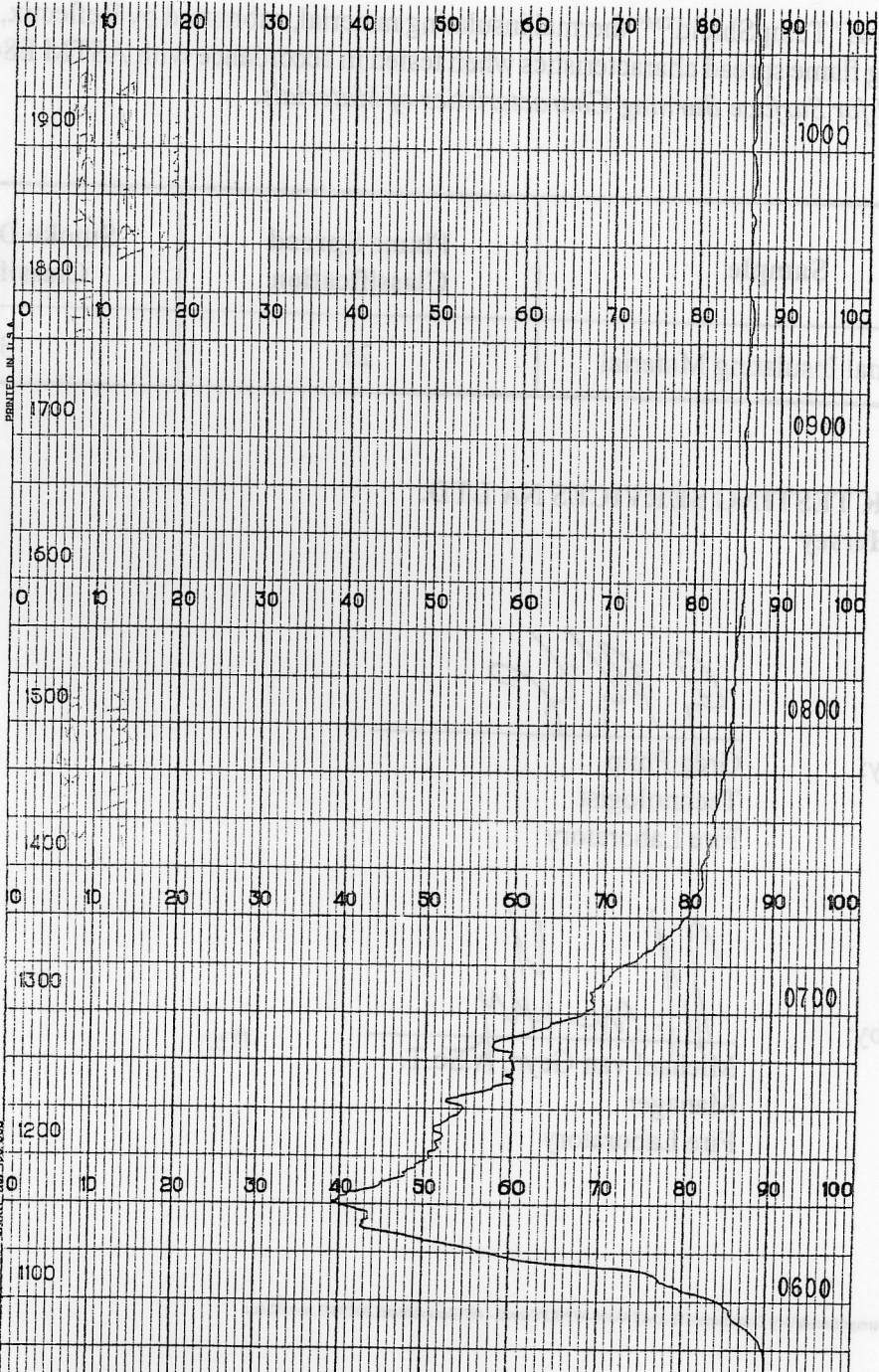
$\frac{10,000 - (\text{smoke integrator reading}) \times 100}{3356} = \text{smoke developed}$

**FLAME SPREAD
DISTANCE IN FEET VS. TIME IN MINUTES**

**Thermal Insulating Material, Run 2
Flamespread=25, Smoke Developed=22**







PRINTED IN U.S.A.

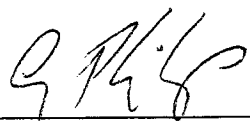
CHART NO. JDC-056

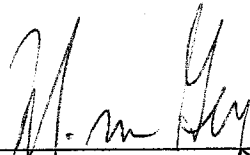
CONCLUSION

The samples of "TempShield™" thermal insulating material, submitted by Reflectix, Inc., exhibited the following flame spread characteristics when tested in accordance with ASTM E84-01, *Standard Test Method for Surface Burning Characteristics of Materials*.

Sample	Flame Spread Classification	Smoke Developed Classification
Thermal Insulating Material	25	30

INTERTEK TESTING SERVICES NA LTD.
Warnock Hersey

Tested and Reported by: 
Greg Philp
Technologist
Fire Laboratory

Reviewed by: 
Michael van Geyn, A.Sc.T.
Manager
Fire Laboratory

GP/bjm